



## Mini DisplayPort to DisplayPort Adapter Cables

- Adapts a Mini DisplayPort Source device to a DisplayPort compatible display
- Supports DisplayPort 1.2 specification
- Supports up to a 4K resolution
- Lifetime Warranty



# Specifications: Mini DisplayPort to DisplayPort Adapter Cables

## Electrical Characteristics:

---

Voltage Rating:	30v	
Conductor Resistance:	@ 20°C max	
Insulation Resistance:	10MΩ/km	
Time Delay:	5.2ns/m (max)	
Attenuation:	5.02dB@100-450MHz	7.69dB@1GHz
	12.595dB@2GHz	17.495dB@3GHz
	22.395dB@4GHz	27.295dB@5GHz
	32.195dB@6GHz	37.095dB@7GHz

## Physical Characteristics:

---

Minimum Bend Radius:	52mm
Approvals:	CE
Warranty:	Lifetime

### Conductor (5 Pair):

---

Conductor:	32AWG (7/0.08TC)
Insulation:	FM-PE, ID:0.62±0.05mm
Color:	White/Black, White/Brown, White/Red, White/Green, White/Blue
Drain:	1:32AWG (7/0.08TC)
Shield:	AL-Foil Wrap, Transparent Wrap

### Conductor (5 Conductors):

---

Conductor:	32AWG (7/0.08TC)
Insulation:	PP, ID:ø0.5±0.05mm
Color:	Red, Blue, Purple, White, Gray

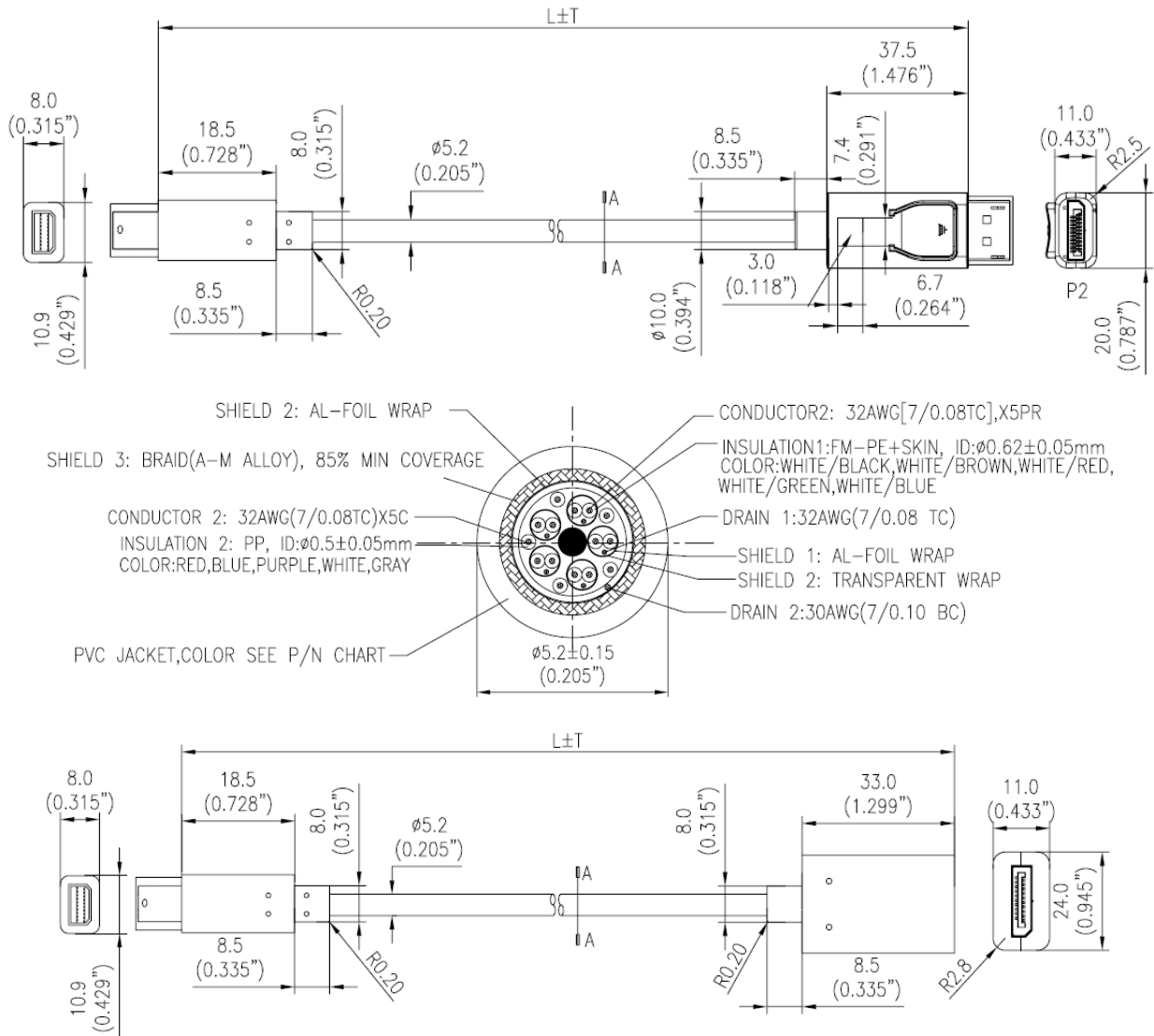
## Overall Cable

---

Jacket:	PVC
Shield:	AL-Foil Wrap Braid, 85% Min Coverage
Drain:	2:30AWG (7/0.10 BC)
OD:	5.2±0.15



# Specifications: Mini DisplayPort to DisplayPort Adapter Cables



Part Number	Description	Weight (Kg)
84297	1m Mini DisplayPort to DisplayPort Adapter Cable M/M—White	
84298	2m Mini DisplayPort to DisplayPort Adapter Cable M/M—White	
84299	3m Mini DisplayPort to DisplayPort Adapter Cable M/M—White	
84300	1m Mini DisplayPort to DisplayPort Adapter Cable M/M—Black	
84301	2m Mini DisplayPort to DisplayPort Adapter Cable M/M—Black	
84302	3m Mini DisplayPort to DisplayPort Adapter Cable M/M—Black	
84303	15cm Mini DisplayPort Male to DisplayPort Female Adapter Converter—Black	
84304	15cm Mini DisplayPort Male to DisplayPort Female Adapter Converter—White	
84305	15cm DisplayPort Male to Mini DisplayPort Female Adapter Converter—Black	

